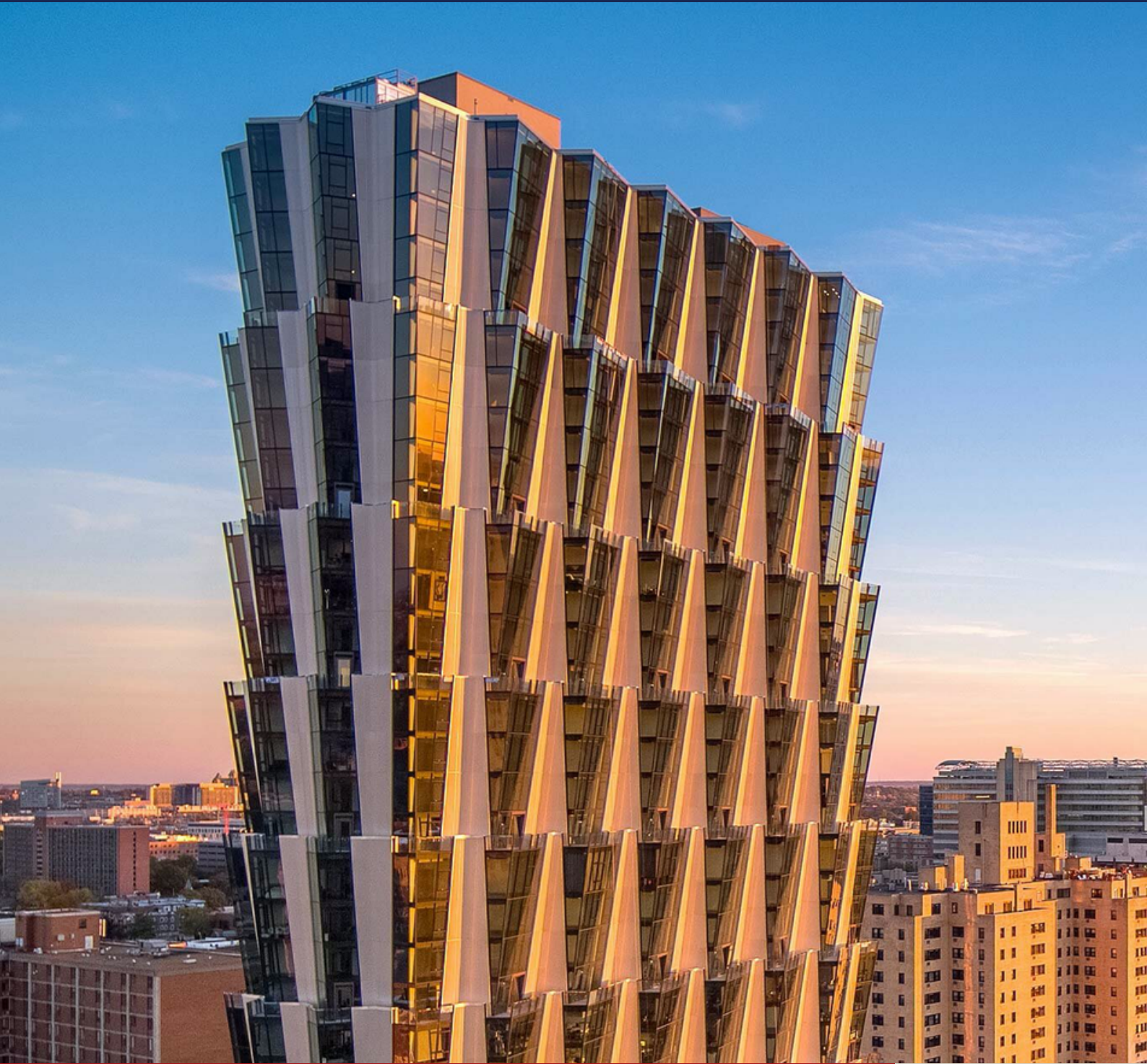


# EUCLID

*2024 Corridor Profile*



WASHINGTON UNIVERSITY MEDICAL  
CENTER REDEVELOPMENT CORPORATION





## Table of Contents

# EUCLID

|                  |    |
|------------------|----|
| Introduction     | 2  |
| Business Map     | 3  |
| Demographics     | 4  |
| Statistics       | 5  |
| Destinations     | 6  |
| Community Assets | 7  |
| Diversity        | 8  |
| Landmarks        | 9  |
| Annual Events    | 10 |



# **EUCLID**

## **CENTRAL WEST END**

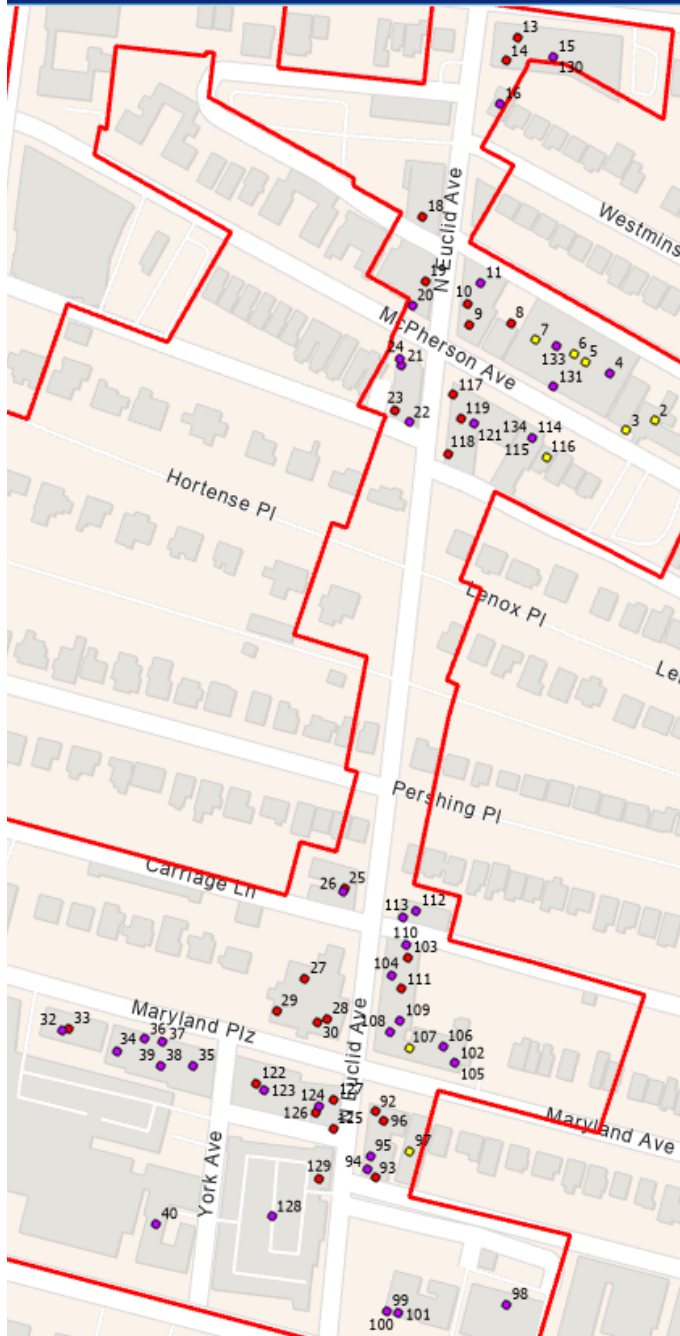
**Named one of America's Top 10 neighborhoods by the American Planning Association, the Central West End is home to a diverse population and the bustling Euclid Business District.**

**Euclid Avenue serves as the main street of the Central West End. It stretches from the Washington University Medical Center on the south to Fountain Park on the north. Euclid Avenue also connects Maryland Plaza, McPherson Avenue, and Washington Avenue.**

**The district contains more than 100 shops, galleries, restaurants, bars, salons, hotels and other businesses.**



# Euclid North - Businesses & Attractions



- Food and Beverage
- Retail and Services
- Venue and Other Attractions

## Venue and Other Attractions

2. The McPherson Wedding Venue
3. Berger Funeral
5. Duane Reed Gallery
6. Projects + Gallery
7. Barrette Barrea Projects
97. World Chess Hall of Fame
107. Chess Club Expansion
116. Houska Gallery

## Food and Beverage

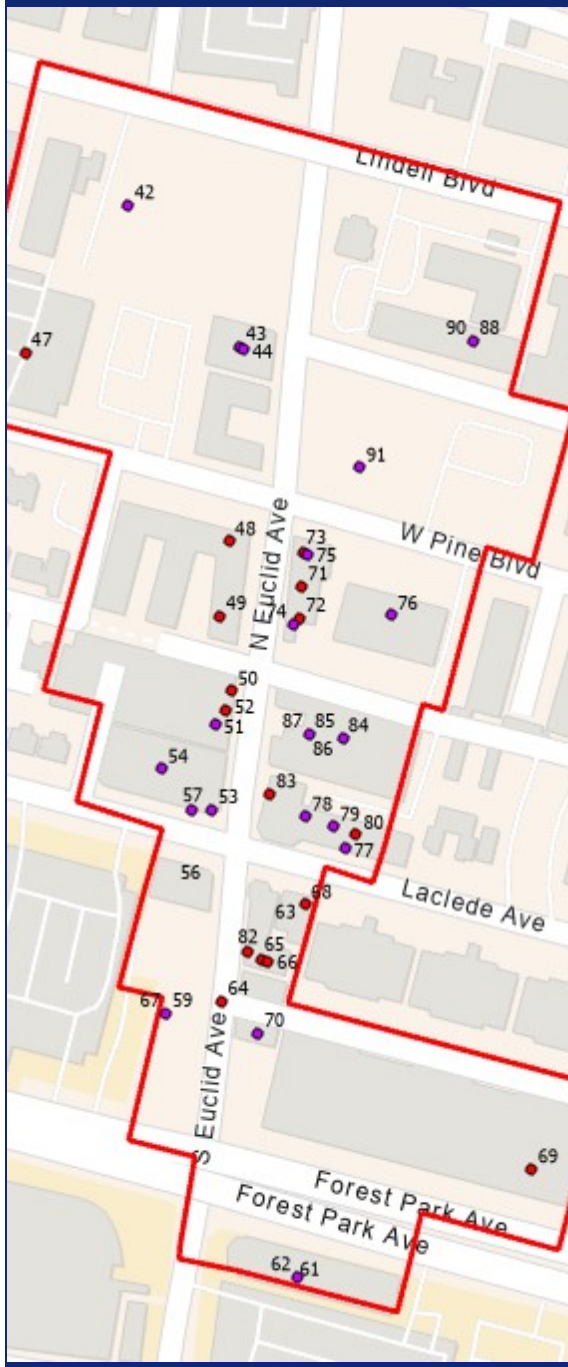
1. Vino STL
8. El Sitio
9. Pi Pizzeria
10. Club Viva
13. Evangeline's
14. Cocina Latina
18. Dressel's Public House
19. Up-Down STL
23. Jeni's Splendid Ice Cream
25. Taste of Lebanon
27. El Burro Loco
28. Drunken Fish
29. Bar Italia Ristorante
30. Medina Grill
33. Edera Italian Eatery
39. The Cup
92. Kingside Diner
93. Insomnia Cookies
96. Starbucks
100. Yellowbelly/ Lazy Tiger
102. Kingside Diner
103. Brennan's
111. Main Squeeze
114. MaryAnn's Tea Room
117. Mission Taco Joint
118. Ranoush
119. Salt + Smoke
122. Twisted Ranch
125. Thai 202
126. Pagan Wine Bar
127. BBC Asian Cafe & Bar
130. Coffee Club

## Retail and Services

4. Centro Modern Furnishings
11. Patty Long Catering
15. TechArtisita CWE
16. Euclid Chiropractic Center
20. The Eye Bar
21. Left Bank Books
22. East \* West
24. Jason Evans Haircutting
26. Golden Grocer
32. Bonobos
34. SUITSUPPLY
35. Lululemon Athletica
36. Brilliant Earth
37. Kendra Scott
38. Eye Roc Eyewear
40. Pure Barre St. Louis
41. Chase Park Plaza
94. Provisions
95. Lemon Salon
98. Bank of America
99. Orange Theory Fitness
101. PLINK CWE
104. Esther & Mila
105. Chess Club Expansion
106. Chess Club and School
108. Chess Club Expansion
109. Warby Parker
110. La Petite Nails
112. Wolfgang's Pet Stop
113. CWE Cyclery
115. Enchanting Embellishment
121. Pass the Past
123. Dovetail
124. Bluemercury
128. St. Louis Public Library
131. Designtex
133. Phip Slein Gallery
134. Bella Bridesmaids



# Euclid South - Businesses & Attractions



- Food and Beverage
- Retail and Services
- Venue and Other Attractions

## Food and Beverage

- 48. First Watch
- 49. Rasoi
- 50. Chick'N Cone
- 52. Jimmy John's
- 56. BBQ Saloon
- 61. Applebees
- 63. Brass Bar
- 64. Revoked Sandwiches
- 65. Racenlli's Pizza
- 66. Zenwich
- 67. Poke Doke
- 68. Brasserie by Niche
- 71. Shake Shack
- 72. Kaldi's Coffee
- 73. Hot Box Cookies
- 80. West End Wok
- 82. Little Saigon Cafe
- 83. Sushi KOI
- 85. Pickles Deli

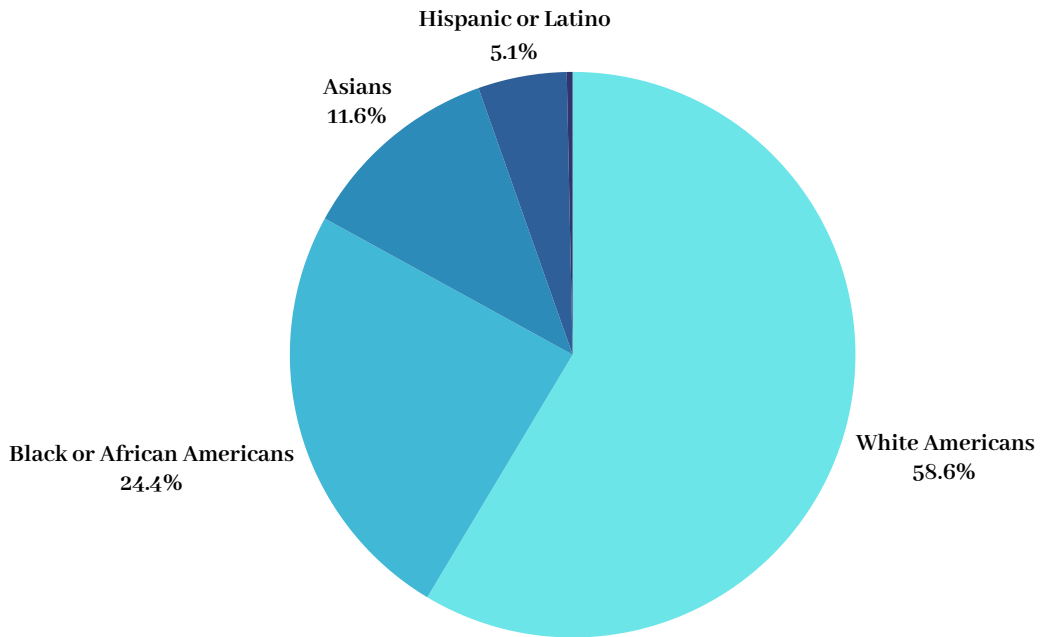
## Retail and Services

- 42. Kindred Hospital
- 43. CBD Kratom
- 44. Walgreens
- 52. Jimmy John's
- 53. Greater Southern Bank
- 54. Clarkson Eye Care
- 57. Central West End Nailshop
- 59. Central Table
- 62. Parkway Hotel
- 70. Good Day Farm Dispensary
- 74. Commerce Bank
- 75. Joint Chiropractic
- 76. BSA Store
- 77. The UPS Store
- 78. CWE Cleaners
- 79. Philip Johnson Salon/Spa
- 84. Patrik Travel
- 86. Treats Unleashed
- 87. Premier Dental Partners
- 88. Holiday Inn Express
- 90. The Fitness Formula
- 91. Whole Foods



# 2021 Census Central West End

Total Population **23,735**



**89%**  
18 & Up

**6%**  
Under 18

| Population                | 2020   | 2021   | Total Change | Percent Change |
|---------------------------|--------|--------|--------------|----------------|
| Total                     | 16,670 | 23,735 | 7,065        | 42%            |
| White                     | 9,477  | 13,540 | 4,063        | 42%            |
| Black or African American | 3,493  | 5,640  | 2,147        | 61%            |

**14,801**  
Total Housing Units

**87%** Occupied      **13%** Vacant



# Euclid Statistics

## Business Categories

|            |    |
|------------|----|
| Restaurant | 50 |
| Service    | 37 |
| Retail     | 25 |
| Venue      | 7  |
| Hotel      | 3  |
| Bar        | 3  |

**Grand Total: 125**



# Destinations



## Maryland Plaza

Maryland Plaza is a premier outdoor shopping and dining destination. Located in the heart of the CWE, it is surrounded by Euclid Avenue, Kingshighway, and Lindell Boulevard,

## West Pine Blvd

The intersection of Euclid and West Pine is at the center of the most walkable part of the CWE. Here, you'll find plenty of restaurants and a grocery store, as well as a variety of services.



## McPherson Ave

This smaller, neighborhood-scale commercial center has an eclectic assortment of restaurants, art galleries, event venues, and more.



# Community Assets

## Medical Center

1 Barnes Jewish Hospital Plz.



The Euclid business district lies near two of the region's largest employers: the Washington University School of Medicine and the BJC HealthCare system. Both facilities attract people to the neighborhood from all over the world.

## Schlafly Library

225 N. Euclid Ave.



The Schlafly Branch of the St. Louis Public Library is located on the corner of Lindell Boulevard and Euclid Avenue next to the Chase Park Plaza. It provides resources, programs and services that support the community. The library is also a gathering place for families.

# Diversity of the CWE

The Central West End is home to a variety of minority-owned businesses

## Bar Italia

13 Maryland Plaza



Visit Bar Italia Ristorante for a taste of authentic Italian cuisine. In the heart of the Central West End, This Black-owned business serves upscale cuisine and crafted cocktails.

Thai 202 accomodates dine in-or take our orders. It was founded by Art Lee who moved to the US in the 1976. The business is still family-owned and prides itself on fresh, authentic food.

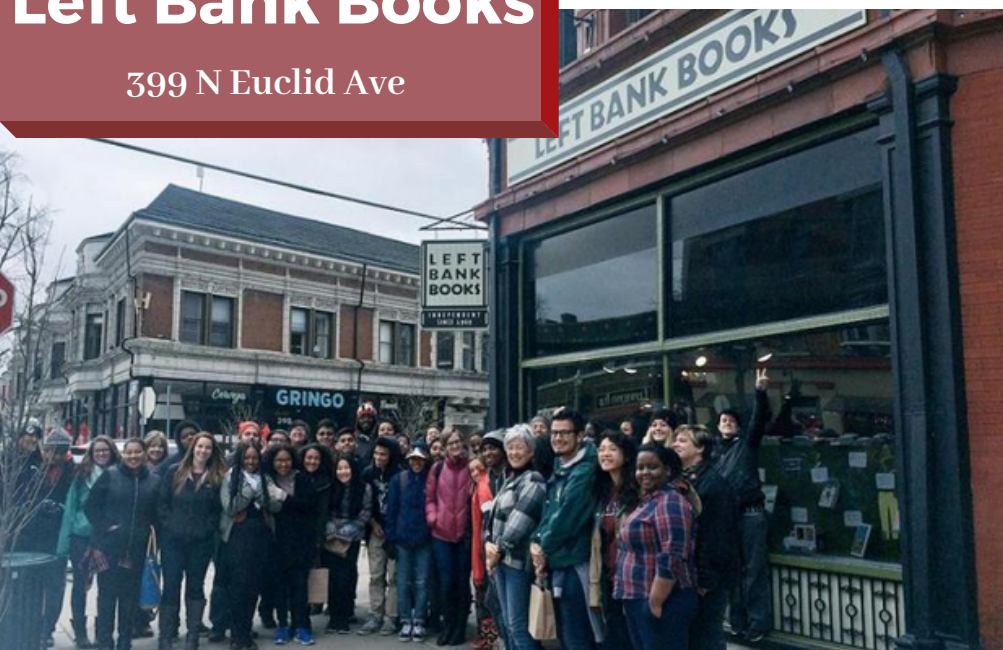
## Thai 202

235 N. Euclid Ave



## Left Bank Books

399 N Euclid Ave

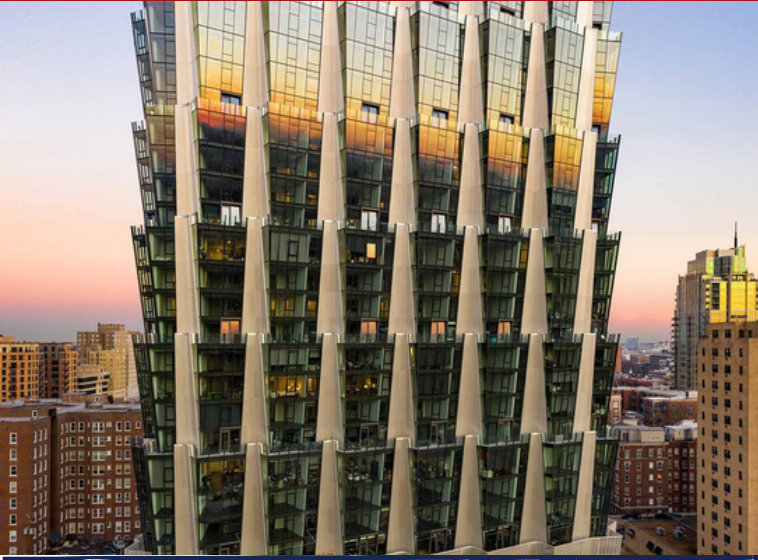


Left Bank Books is the oldest and largest independently-owned bookstore in St. Louis. Opened in 1969, it offers new and used books, gifts, cards, reading accessories and community services.



# LANDMARKS

## One Hundred Building



Rising 36 stories, the One Hundred building shapes the St. Louis skyline to the West. Nicknamed the "cheese grater," the building has modern luxury apartments.

## World Chess Hall of Fame



The World Chess Hall of Fame celebrates one of the world's oldest games through engaging exhibitions and creative programming.

## Forest Park



West of Euclid Avenue is Forest Park. Opened on June 24, 1876, it is amongst the largest urban parks in the US. The home of the 1904 World's Fair, the park attracts more than 12 million visitors a year.

## Chase Park Plaza



This historic Art Deco building opened in 1922. The hotel features 338 guest rooms, three onsite restaurants, a movie theater, fitness center, event space, and an outdoor Mediterranean-style swimming pool.



# ANNUAL EVENTS

## Back In Bloom

April

This annual event, marked by the full bloom of tulips throughout the neighborhood, features live music, street performers, balloon makers, giveaways, deals and discounts at participating businesses.

## Friday Night Music Series

May - September

Every Friday night from 6PM to 9PM, the neighborhood celebrates the return of warm weather by bringing local live music and food to the streets of the CWE.

## Legendary Halloween Party

October

St. Louis' largest Halloween Party kicks off with family friendly activities throughout the day. The party continues as the sun sets with a costume contest, vendors, food and drinks.

## Home & Garden Tour

June

The Central West End Association gives St. Louisans a view inside historic homes in the neighborhood through self-guided tours that let participants explore private mansions and gardens.

## Cocktail Party

June

The CWE is home to the first cocktail party on record. Held in 1917 by Mrs. Julius S. Walsh Jr. in her home at 4510 Lindell Boulevard. Each year, the CWE pays tribute to this event by celebrating the neighborhood's history in style.

## CWE Window Walk

December

Every Saturday in December, visitors are invited to walk amidst elegantly decorated windows while shopping at boutiques and enjoying seasonal drinks and meals at local restaurants. Visitors enjoy holiday festivities like ice carvings, carriage rides, carolers, live music, street performers, a roaming Santa, and more.





## Washington University Medical Center Redevelopment Corporation

**Brian Phillips**  
Executive Director  
(314) 747-2331  
phillipb@wustl.edu

**David Chunn**  
Community Development Specialist  
(314) 747-2336  
chunn@wustl.edu

**Samuel Odoom**  
Community Development Specialist  
(314) 747-2333  
odoom@wustl.edu

**Kimberly Smith-Drake**  
Community Development Specialist  
314-747-2332  
ksmith32@wustl.edu

**Lori Kristjansson**  
Redevelopment Accountant  
(314) 747-2334  
kristjansoonl@wustl.edu

**Jaime Evans**  
Administrative Assistant  
(314) 747-2331  
evans.jaime@wustl.edu