

VANDEVENTER

2024 Corridor Profile



WASHINGTON UNIVERSITY MEDICAL
CENTER REDEVELOPMENT CORPORATION



Table of Contents

VANDEVENTER

Introduction	2
Business Map	3
Demographics	4
Statistics	5
Destinations	6
Neighborhood Growth	7
Community Assets	8
Connectivity	9

VANDEVENTER

FOREST PARK SOUTHEAST

Vandeventer Avenue has benefited from the success of the Grove's transformation into a burgeoning commercial district. This corridor spans from Interstate 44 to Forest Park Avenue, running along the borders of Forest Park Southeast, Central West End, Midtown, and Botanical Heights.

The street is named for Peter Lewis Vandeventer, who arrived in St. Louis in the 1860s with his brothers. They made money from selling stocks on the east coast and took the train west to St. Louis to invest in the region.

Vandeventer contains a variety of restaurants, shops, bars, offices, and more.

Vandeventer - Businesses & Attractions



- Food and Beverage
- Retail and Services

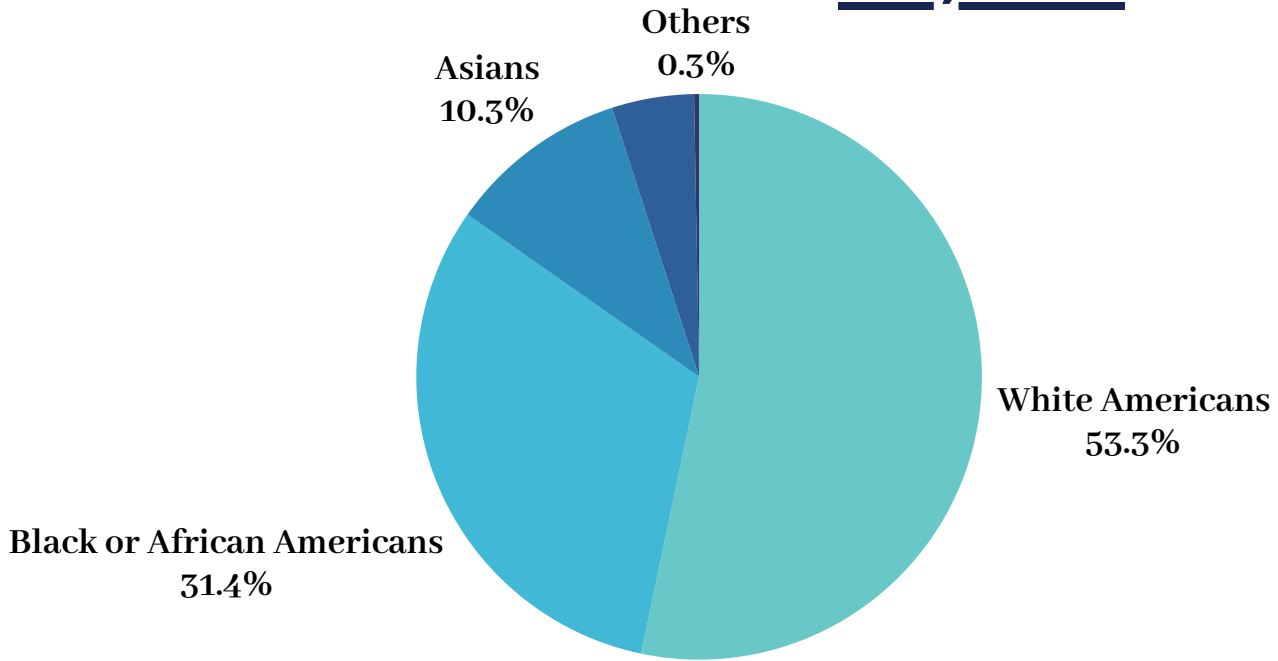
Food and Beverage	Retail and Services
-------------------	---------------------

- | | | | |
|------------------|-----------------------------|-------------------------------------|--|
| 1. The Vandy | 30. Evae's Hookah Bar | 1. Luxury Leaf Marijuana Dispensary | 17. Metropolitan St. Louis Equal Housing and Opportunity Council |
| 4. Takashima | 33. Kaldi's Coffee Roasting | 2. Document Imagin System | 18. Biz by faith |
| 10. The Get Down | 34. Raising Cane's Chicken | 8. M&A Auto Sales & Repair | 31. Vandeventer Truck Sales |
| 12. The Vandy | 46. Rising Cane's | 9. Select Style Grooming | 32. Phillips 66 |
| 19. Sweetwaters | | 11. Classic Metal Craft | 35. Commerce Bank |
| 20. Chao Baan | | 13. Secret Garden Spa | |
| 21. Seoul Taco | | 14. Quality Electric Motor Co. | |
| | | 15. Advertisers Printing Co. | |
| | | 16. Katsianne | |



2021 Census Vandeventer

Total Population **27,708**



82% 18 & Up **8%** Under 18

Population	2020	2021	Total Change	Percent Change
Total	27,751	27,708	-43	-0.1%
White	13,867	14,390	523	3%
Black or African American	9,466	8,490	-976	-10%

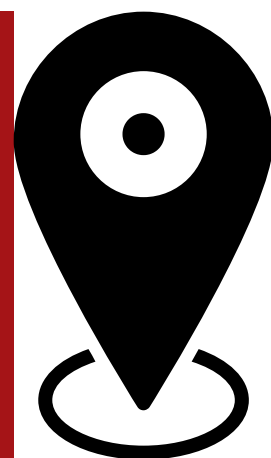
17,291
Total Housing Units

85% Occupied **15%** Vacant

Vandeventer Statistics

Business Categories

Restaurant	2
Bar	4
Service	23
Retail	7
Grand Total:	36



Destinations

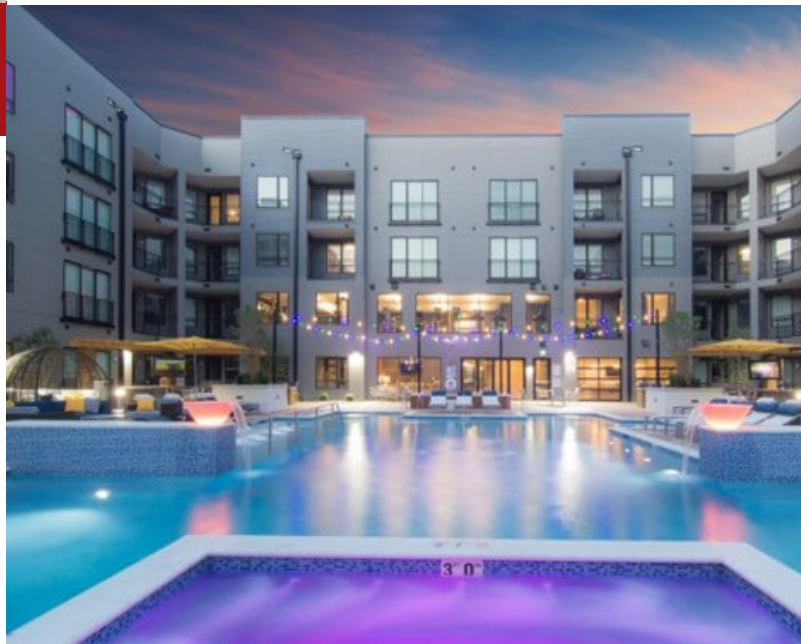


Bar K

Bar K has a variety of offerings for dog owners. It features a two-acre dog park, as well as an indoor park. There also is a restaurant, three bars, and event space.

Chroma

Chroma is an urban development of luxury apartments located in the Grove. The complex also contains a yoga garden, spa, hammock retreat and coffee bar.



Rockwell Beer Co

Rockwell Beer Company is A 15-barrel Brewery with a diverse menu. Beer enthusiasts and casual drinkers enjoy their crafted creations.



Neighborhood Growth

Vandeventer Avenue serves as an industrial corridor and transportation artery for the city. However, multiple projects plan to build off of the success of the Grove and transform Vandeventer into a thriving community.

TCARE

1252 Vandeventer Ave.



Midtown-based TCARE will be moving their offices to the Dubinsky Building at Vandeventer and Talmage Avenue.

TCARE is a tech company focused on caregiver support that moved to St. Louis from Madison, Wisconsin in 2019.

Developers plan to renovate the Rock Spring School into 20,000 square feet of office space. Pier Property Group plans to construct a 107-unit apartment complex next to the school fronting Vandeventer.

Rock Spring School

3974 Sarpy Ave.



Community Assets

City Foundry

3730 Foundry Way



St. Louis' first food hall, City Foundry is home to a 30,000-square-foot food court, a movie theater, grocery store, and curated retail shops. There is also a miniature golf and music venue. The 15-acre site is located on the former home of Century Electric Company.

Conveniently located just off Highway 64, IKEA St. Louis has something for everyone. Spanning over 380,000 square feet, the store specializes in furniture and home goods. There is also a restaurant. Opened in 2015, IKEA also hosts special events.

IKEA St. Louis

1 IKEA Way



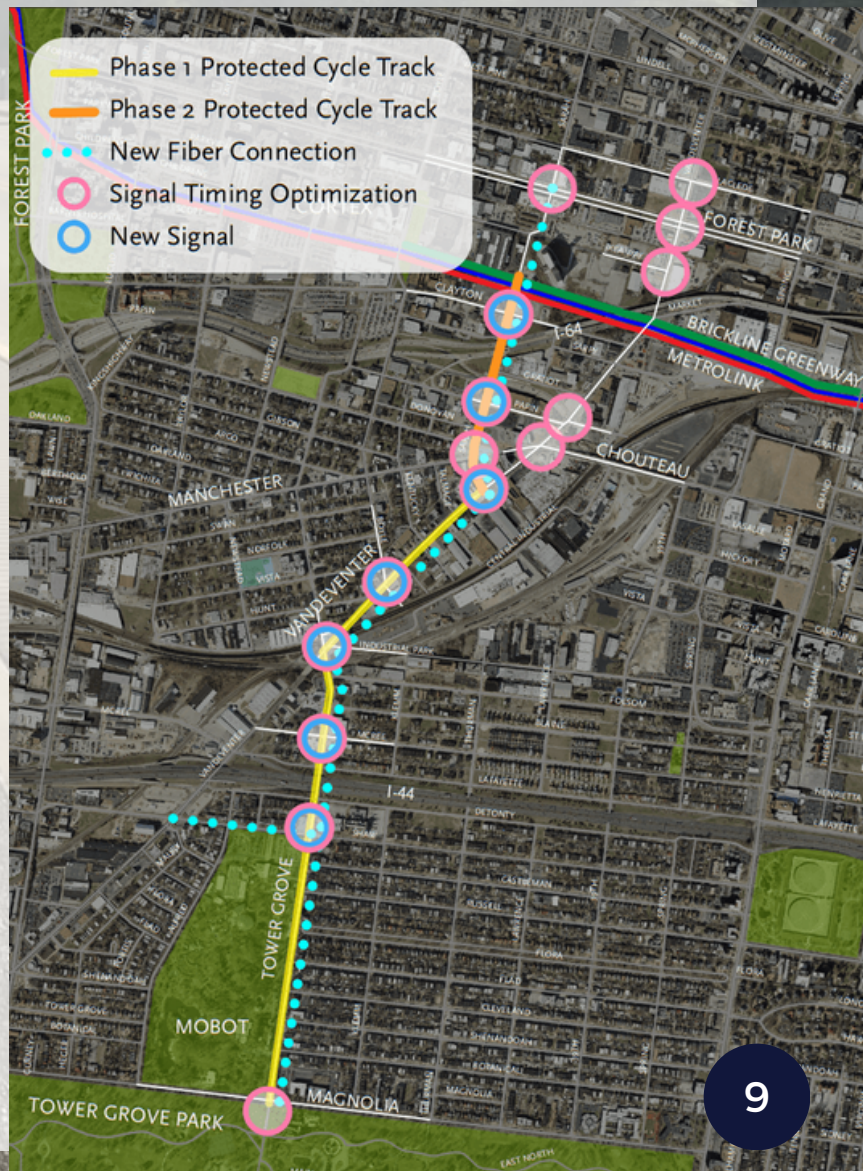
Connectivity

The **Tower Grove Connector** is a 1.8-mile protected bicycle track that will connect Tower Grove Park with the Cortex.

Other aspects of the project include:

- Sidewalk and crosswalk improvements
- Intersection improvements
- New traffic signals
- Traffic management upgrades
- Repaving of Tower Grove Avenue

In Phase 1, the path will go along Vandeventer and Tower Grove Avenues between Magnolia Avenue and Sarah Street. The project will connect Tower Grove Park and the Missouri Botanical Garden to the Brickline Greenway, another cycling path under construction between the Arch, Forest Park, and Fairground Park.





Washington University Medical Center Redevelopment Corporation

Brian Phillips
Executive Director
(314) 747-2331
phillipb@wustl.edu

David Chunn
Community Development Specialist
(314) 747-2336
chunn@wustl.edu

Samuel Odoom
Community Development Specialist
(314) 747-2333
odoom@wustl.edu

Kimberly Smith-Drake
Community Development Specialist
314-747-2332
ksmith32@wustl.edu

Lori Kristjansson
Redevelopment Accountant
(314) 747-2334
kristjansoonl@wustl.edu

Jaime Evans
Administrative Assistant
(314) 747-2331
evans.jaime@wustl.edu

www.wumcrc.org | X @wumcrc | Facebook: search "wumcrcstl"