



Washington University Medical Center
Redevelopment Corporation

Holiday Outreach 2021

Summary Report



Contents

Letter from the Executive Director 2

About the Program 3

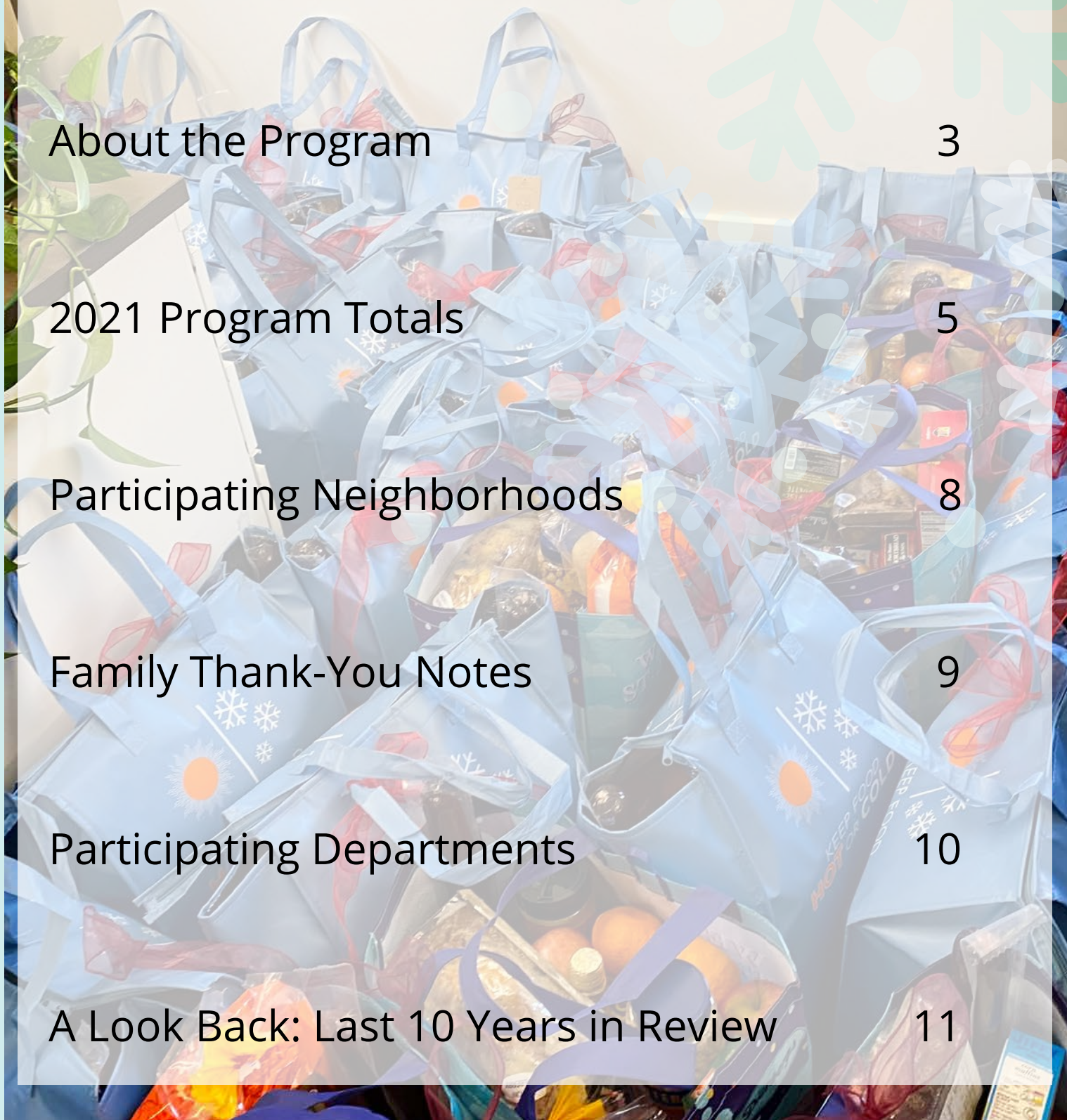
2021 Program Totals 5

Participating Neighborhoods 8

Family Thank-You Notes 9

Participating Departments 10

A Look Back: Last 10 Years in Review 11



Note from Executive Director

This year's Holiday Outreach was another tremendous success in spite of the ongoing pandemic. More than 150 holiday food baskets were delivered to local families and seniors the week before Christmas. Each of our 37 adopted families were provided utility assistance, a holiday gift basket and a minimum of \$700 in gift cards to help with the holidays. Furthermore, 78 seniors and 33 additional families received holiday gift baskets and a \$100 gift card.

Thanks to the generosity of our donors, we raised more than \$64,000, a record amount of funding that enabled many local families to celebrate the holiday season while continuing to maintain their households in these trying times. We are extremely grateful not only to our colleagues at the Washington University School of Medicine but also to the 680 individual donors who gave this year.

We want to thank Park Central Development and other local community partners for their continued commitment to this program. They are a major reason why this program continues to be such a success year after year.

Together, we have done some incredible things and brought so much holiday cheer to our community. Here's to the next 10 years of Holiday Outreach!

Happy New Years,

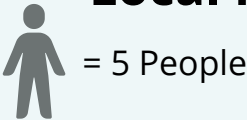
Brian K. Phillips, *Executive Director and Assistant Vice Chancellor*

About the Program

The Holiday Outreach Program is an annual community initiative administered by the Washington University Medical Center Redevelopment Corporation (WUMCRC). Our mission through this program is to aid in stabilizing the neighborhoods surrounding the Washington University medical campus.

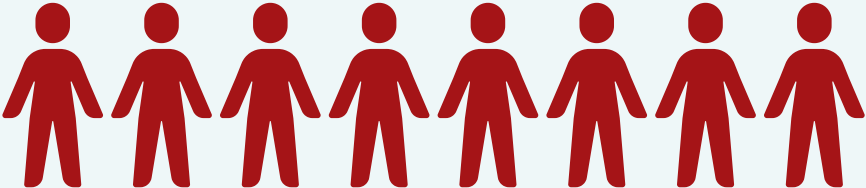
Participating departments of the Washington University School of Medicine were matched with families and individuals in order to provide assistance with utility payments, grocery store gift cards, or other potential items from their wishlist.

Local Families & Seniors Served by Holiday Outreach



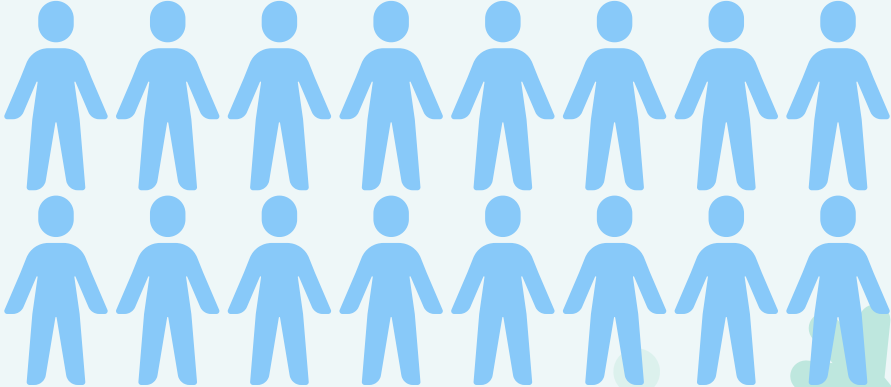
Adopted Families

37 Adopted Families



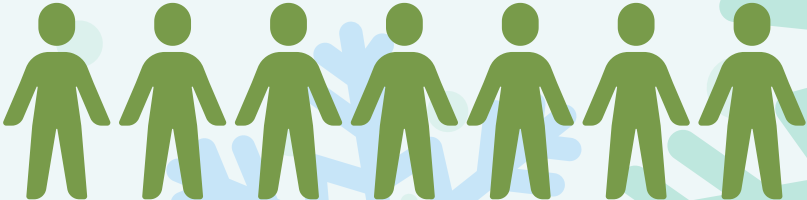
Seniors

80 Seniors



Additional Families

33 Additional Families



About the Program

Holiday baskets were sourced through **Dierbergs** to provide a holiday meal along with a gift card to low-income, elderly housing facilities.



Holiday baskets contained ingredients to cook a holiday meal, snacks, and sanitary items for the winter.



2021 Program Totals

2021 Fundraising Goal: **\$50,000.00**

Total Donations to Seniors **\$11,469.21**



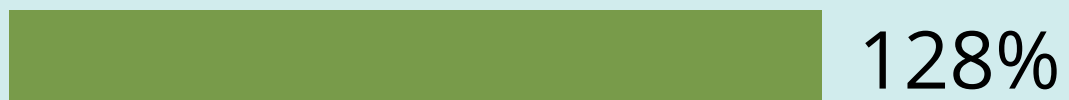
Total Donations to Adopted Families **\$43,790.00**



Total Donations to Additional Families **\$8,790.00**



Final Donations to Holiday Outreach **\$64,092.21**



- **\$4,001.03** used to pay outstanding utility bills for families
- **\$42,325** in gift cards given to families in need
- **\$8,000** in gift cards given to elderly individuals in need
- **\$10,056.12** used to purchase Holiday Baskets to families and seniors in need.



Largest donation:	\$2,000.00
Smallest donation:	\$5.00
Average donation:	\$75.00

693 total donations
 received, given by
681 individual donors

80 Holiday Baskets were delivered to elderly individuals living in housing facilities.

37 local families in need received financial assistance in the form of utility bill payment, gift cards, and Holiday Baskets

33 Holiday Baskets were delivered to additional local families in need.

3 families at City Garden Montessori School in Botanical Heights received financial assistance in form of utility bill payment and/or gift cards

In total, we were able to serve **73 local families and 80 seniors** this holiday season.



Participating Neighborhoods

Each year, we reach out to neighborhood stakeholders to identify local families in need and distribute program applications to them. This year, families participating in the program live in:

**Forest Park
Southeast**

**Botanical
Heights**

**Central West
End**

Vandeventer

Lewis Place

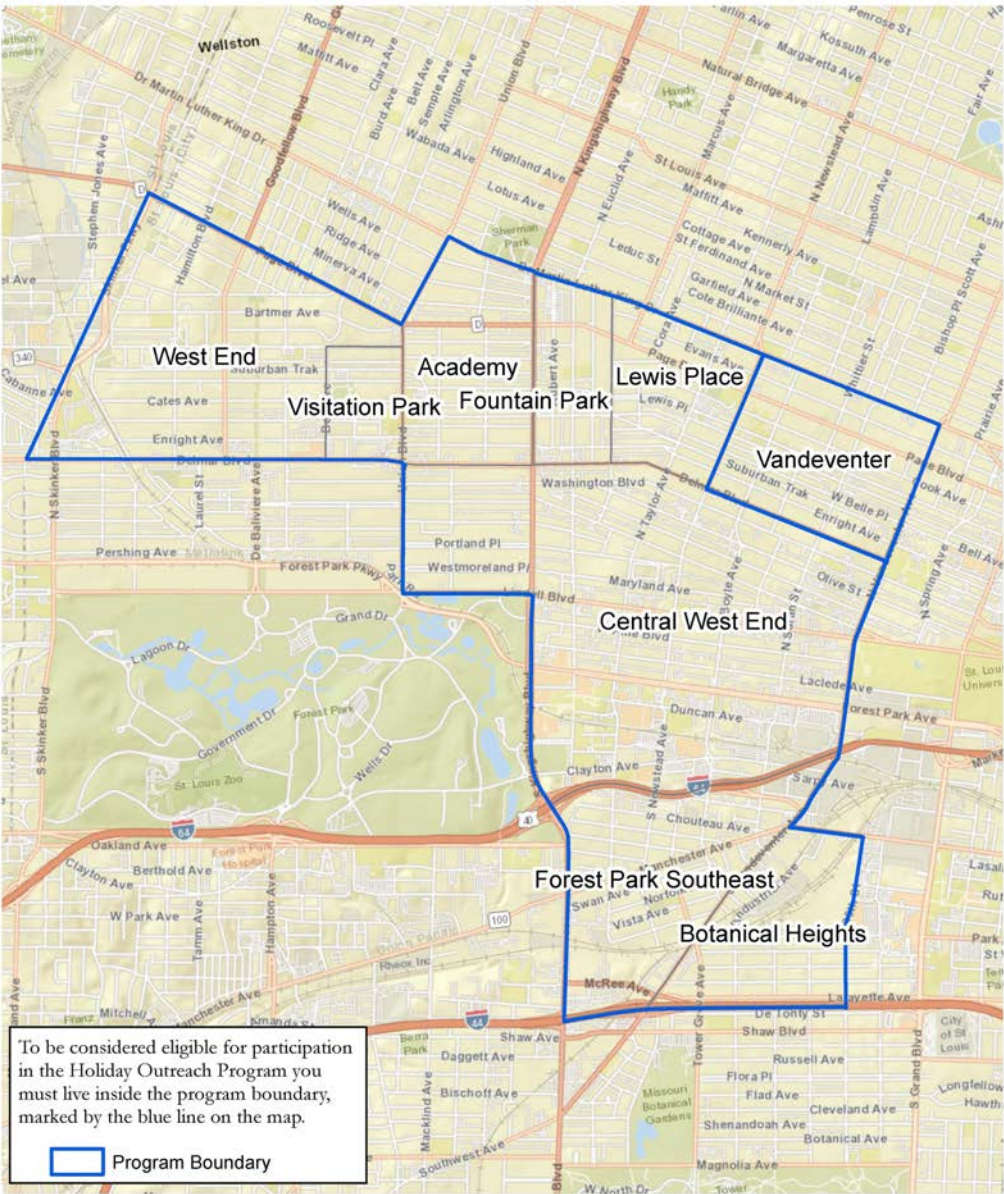
Fountain Park

**Academy-
Sherman Park**

Visitation Park

West End

Holiday Outreach Boundary 2021



THANK YOU from Families

With A HEART-FEEL "Thank-You"
 For the Blessings of gifts
 you gave to our Family
 It is BECAUSE of your gifts
 we are able to have a Christmas
 this year. MAY GOD BLESS
 you ALL with GOOD HEALTH
 and HAPPINESS ☺

2021

DEAR
 WUMC ☺

Wishes sent for a Christmas Season
 sealed with love and warmth
 that lasts throughout the New Year.

HAPPY Merry Christmas
 Holidays Blessings To You & Yours
 In the Coming
 New Year ☺
 SAUNDRA
 DACE ☺



THANKFUL and BLESSED

Thank You So much
 for the Gift Basket and
 \$100.00 Gift Card it help me
 alot. Amen Words Can Not
 Express how it feels.
 God bless each and everyone
 of you.
 Happy New Year
 2022

Thank you!

Mrs. Bertha
 Bellis pie

God's best to you! Christ's blessings on you!
 PHILEMON 1:3 The Message



Bless you for the little things
 you do in thoughtful ways,
 Bless you for the way you've
 brightened up so many days;
 Bless you for your giving heart,
 as kind as it can be,
 Bless you in a thousand ways
 for truly blessing me.



Participating Departments & Donors

Thank you to our partners for your contribution to this wonderful program and for helping us provide utility and grocery assistance to our families and seniors this holiday season!

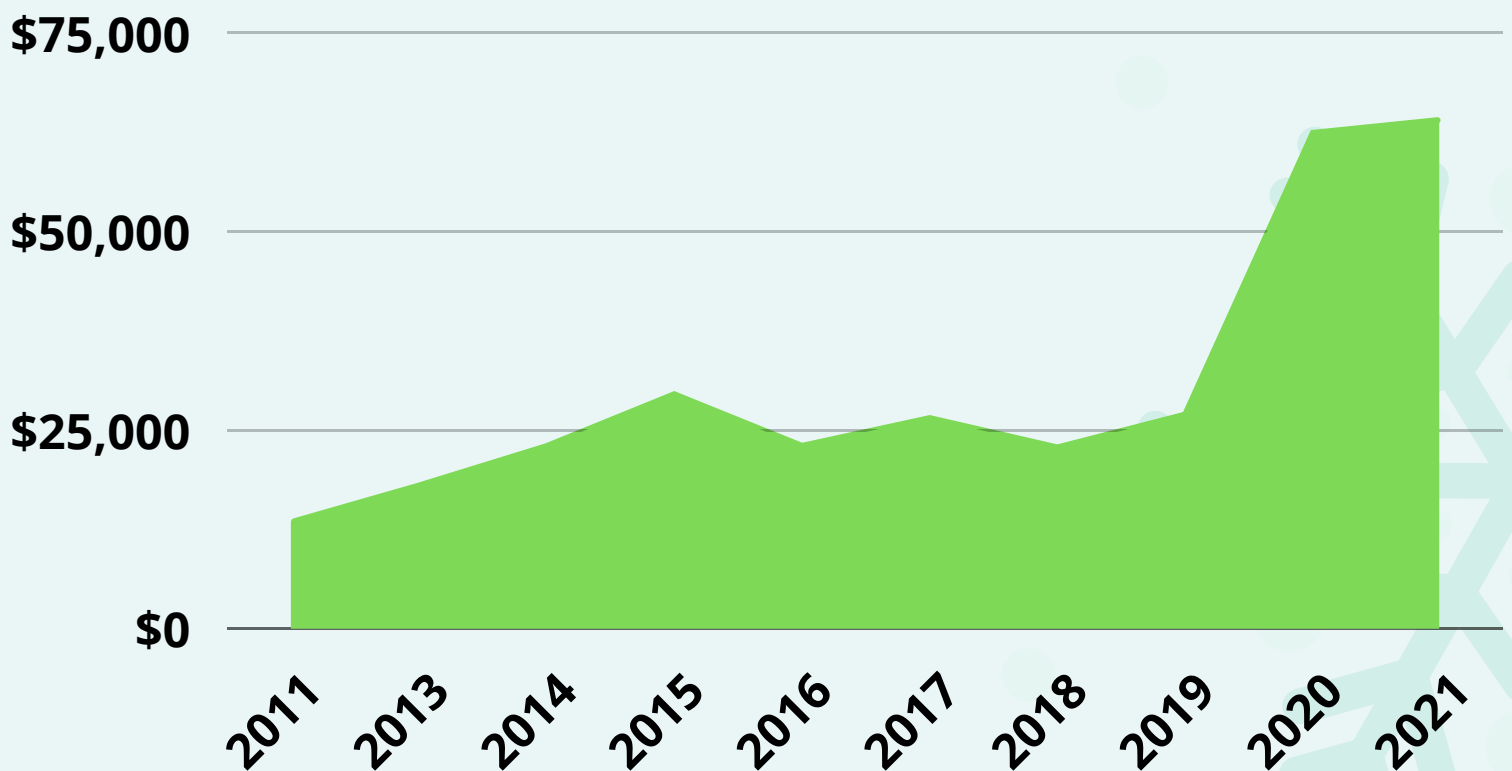
- APM
- Anesthesiology
- CRBSOST
- Dean Suite
- Department of Medicine, Office of The Chair
- Department of Molecular Microbiology
- General Medical Sciences
- Missouri Foundation for Health
- Neurology
- Operations & Facilities Management Department
- OHIDS
- Occupational Therapy
- Ophthalmology and Visual Sciences
- Otolaryngology
- Pathology-Immunology
- Pediatrics
- Physicians Billing Services
- Psychiatry
- Maureen Patterson
- Biochemistry and Molecular Biophysics
- McCarthy Building Companies, Inc.
- Neuroscience
- Office of Physician Billing Compliance
- Research Administration Services
- Center for Clinical Studies

10 Years in Review

The Holiday Outreach Program began in 1998 with the purpose of assisting needy families located in the Forest Park Southeast and Botanical Heights neighborhoods.

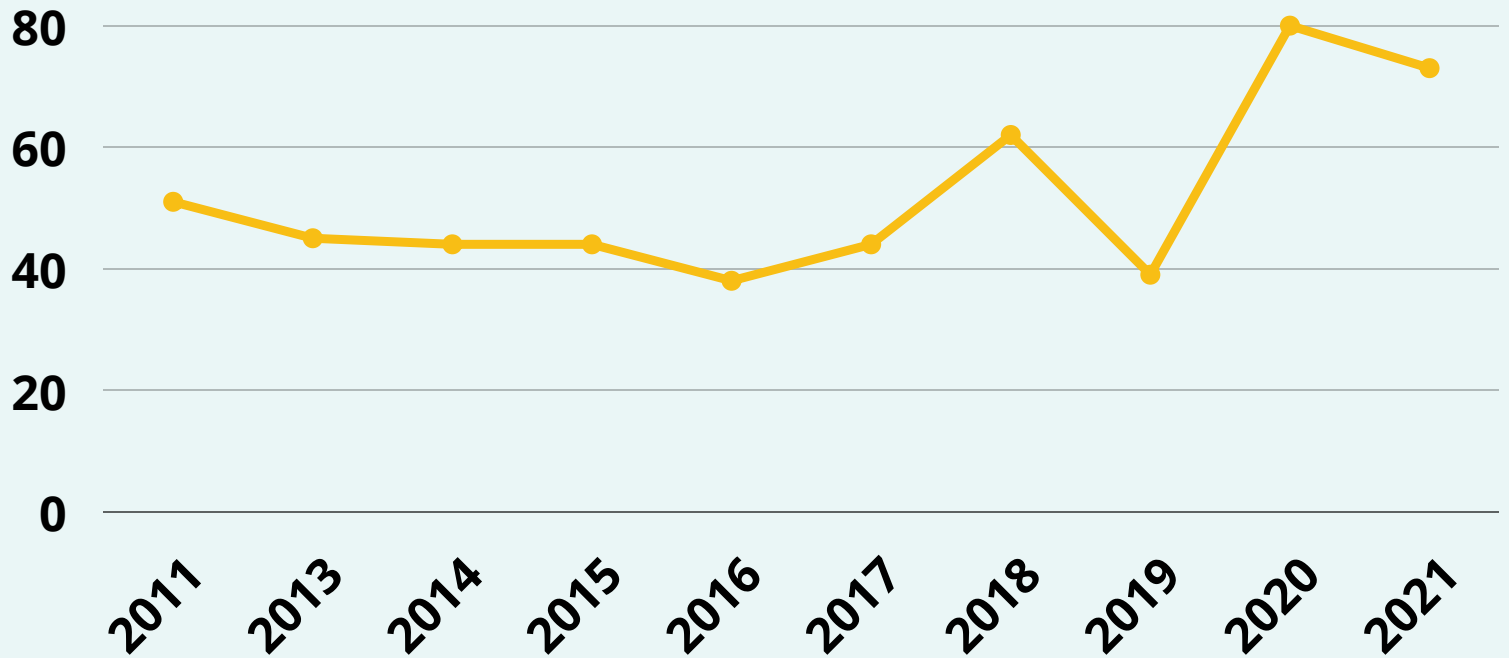
The program has steadily grown since then and the last 10 years of Holiday Outreach have been remarkable.

Total Funds Raised (2011-2021)

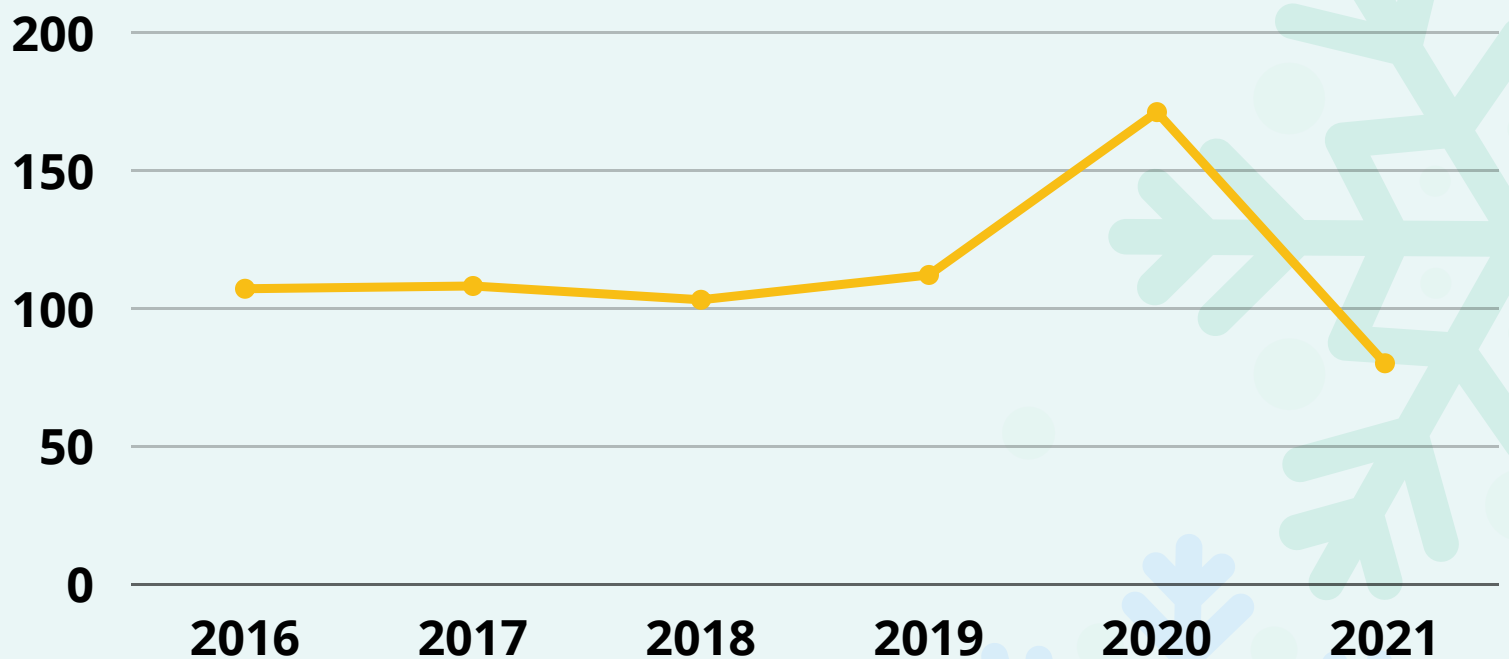


10 Years in Review

Families Served (2011-2021)



Seniors Served (2016-2021)





2012



2016



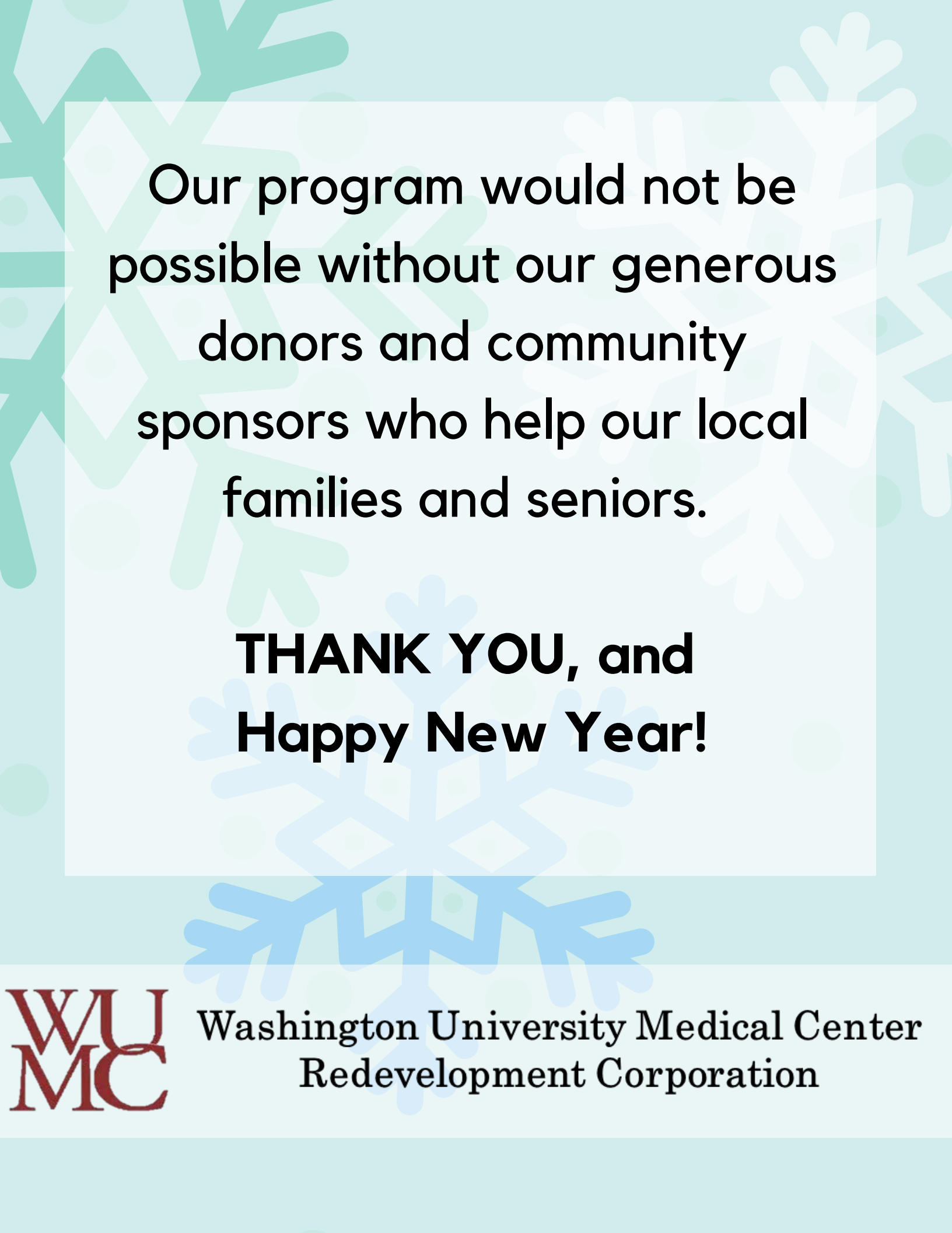
2016



2016



2013



Our program would not be possible without our generous donors and community sponsors who help our local families and seniors.

**THANK YOU, and
Happy New Year!**



Washington University Medical Center
Redevelopment Corporation